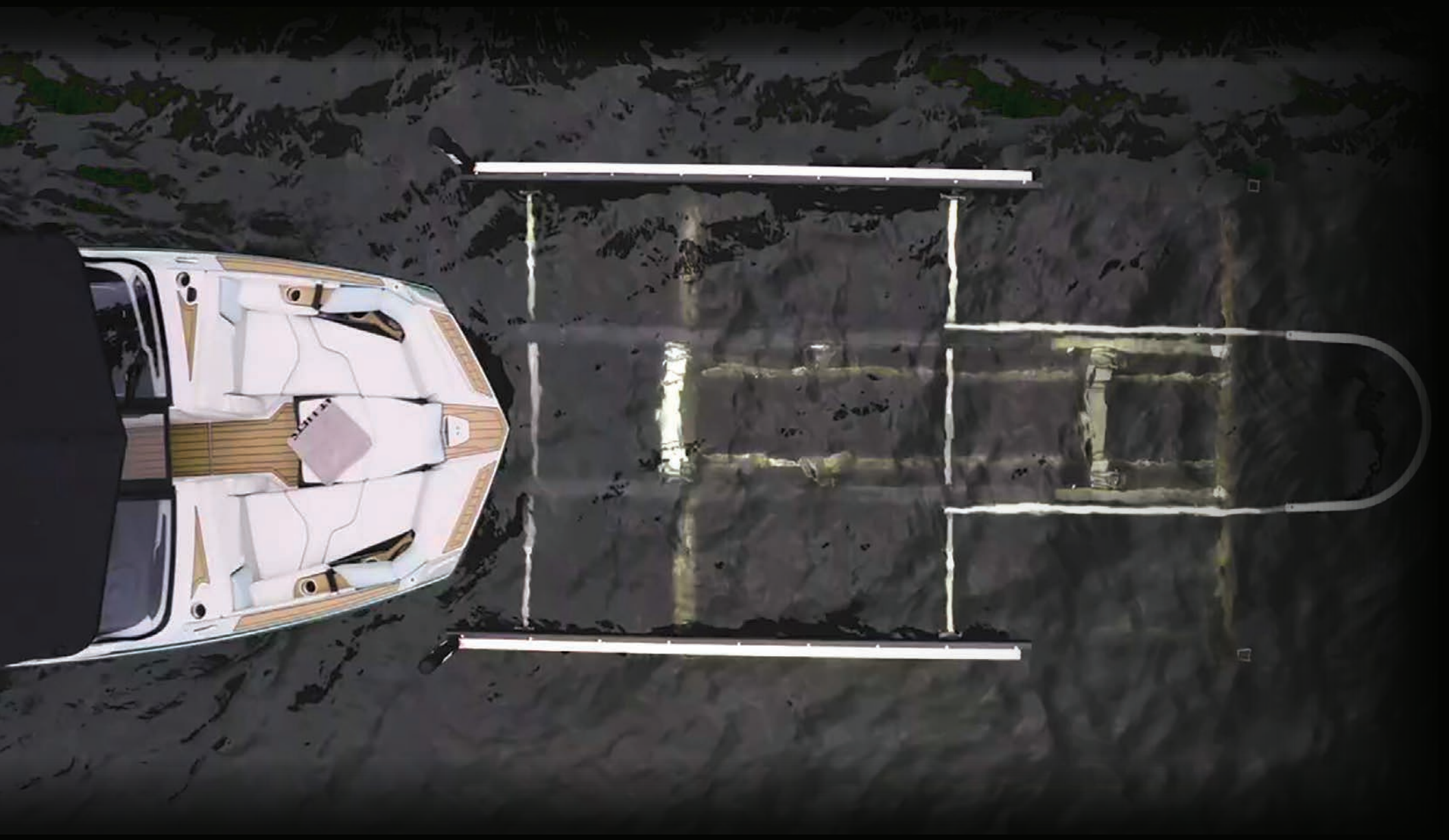


# RGC | BOAT LIFTS & DOCKS

REIMANN&GEORGER CORP.





# THE RGC ADVANTAGE

**INNOVATION AND QUALITY** - There's no room for compromise when it comes to protecting your investment. At RGC, we engineer and construct our products with the end user in mind – for performance, durability, and low maintenance. Precise manufacturing and the highest quality materials are the standard, and our products are tested to ensure flawless operation, so you can rest assured that your lift will withstand the harshest elements and the heaviest use.

**SUPERIOR SERVICE** – It is our top priority to provide you with excellent customer service. Our focus is always on the individual customer needs – to build a product you can trust, and back it with the best warranty and service you can depend on, so you can relax and make the most of your time on the water.

**EXPERIENCE YOU CAN TRUST** - For over 75 years, RGC has provided waterfront solutions to meet the needs of countless applications. As boats have evolved, our products have innovated, and RGC now offers the most versatile line of boat lifts in the industry. We continually invest in our processes, our technology, and our people, so we may deliver you the most reliable products and service you can trust.



# HYDRAULIC LIFT

## ELEVATE THE EVERYDAY WITH EFFORTLESS FUNCTIONALITY

When you must have the best, RGC's Hydraulic Lift delivers. Our most innovative lift is engineered with the end user in mind – for low maintenance and effortless functionality. The Hydraulic lift will have you on the water in seconds with solid protection and dependable durability.

- Fast, easy, smooth lifting at the push of a button.
- Lifting heights of 48", 60" and 72" (8,000 lb. capacity only).
- Capacities from 1,750 lbs. to 12,000 lbs.
- Engineered, tested and warranted to withstand full capacity at full height.
- High quality Marine Grade Aluminum and welded frame construction is more reliable and lasts through years of use and the harshest elements.
- Superior Aluminum Hydraulic cylinders come standard with chrome plated stainless steel shafts and stainless steel fittings.
- Easy installation and adjustability - no special tools required.
- Eco-friendly biodegradable hydraulic fluid.
- Accommodates Pontoon & Tritoon boats with an optional Pontoon/Tritoon kit.
- Add an RGC Canopy for complete protection of your investment.



### AVAILABLE OPTIONS



#### VERTICAL GUIDE POST COVERS

Complete your lift and protect your boat with a pair of guide post covers.



#### VERTICAL GUIDE POSTS

Safely guide your boat onto the carriage in wind and tide.



#### BOW STOP

Securely positions your boat in the cradle.



#### WAKEBOARD GUIDE-ONS

Vertical and full length guides combine to offer solid protection.



**VINYL BUNKS**

Cushion and protect your boat. Vinyl is stain and fade resistant and the riveted design withstands years of use.

**ALUMINUM FRAME**

Sturdy thick walled marine grade aluminum extrusions provide superior strength.

**ADJUSTABLE EXTENSION LEGS**

Equipped with large foot plates to provide greater stability.



**HYDRAULIC CYLINDERS**

Come standard with chrome plated stainless steel shafts and stainless steel fittings.

**SOLAR PANEL**

Power your lift with clean, free, low maintenance and safe solar power.



**WIRELESS REMOTE TRANSMITTER**

Convenient control of your lift from a distance.

**LIFT ARM PIVOTS**

Reinforced with bushings for added reliability and longevity of use.



**HYDRAULIC CONTROL BOX**

Designed for maximum efficiency with superior components. Available in 12V or 24V DC power.



**FULL GUIDE-ONS**  
The ultimate protection for easy entry and exit.



**PONTOON AND TRITOON KITS**  
Outfit your Hydraulic Lift to fit a Pontoon or Tritoon boat with RGC's cradle kit.

Model	Weight Capacity	Maximum Beam	Overall Width (inc. feet)	Overall Length (inc. feet)	Maximum Lifting Height	Minimum Bunk Height	Hydraulic Cylinders	Shipping Weight (approx.)
HL17565-60	1,750 lbs.	65 in.	81 in.	131 in.	60 in.	25 in.	1	235 lbs.
HL20058-48	2,000 lbs.	58 in.	74 in.	119 in.	48 in.	24.5 in.	1	215 lbs.
HL20065-48	2,000 lbs.	65 in.	81 in.	119 in.	48 in.	24.5 in.	1	225 lbs.
HL40112-48	4,000 lbs.	112 in.	129 in.	170 in.	48 in.	25 in.	2	512 lbs.
HL40120-48	4,000 lbs.	120 in.	137 in.	170 in.	48 in.	25 in.	2	522 lbs.
HL40120-60	4,000 lbs.	120 in.	137 in.	182 in.	60 in.	26 in.	2	542 lbs.
HL60112-48	6,000 lbs.	112 in.	129 in.	198 in.	48 in.	29.5 in.	2	690 lbs.
HL60120-48	6,000 lbs.	120 in.	137 in.	198 in.	48 in.	29.5 in.	2	710 lbs.
HL70112-48	7,000 lbs.	112 in.	129 in.	198 in.	48 in.	29 in.	2	720 lbs.
HL70112-60	7,000 lbs.	112 in.	129 in.	198 in.	60 in.	29 in.	2	720 lbs.
HL70120-48	7,000 lbs.	120 in.	137 in.	198 in.	48 in.	29 in.	2	740 lbs.
HL70120-60	7,000 lbs.	120 in.	137 in.	209 in.	60 in.	30 in.	2	760 lbs.
HL80120-72	8,000 lbs.	120 in.	141 in.	209 in.	72 in.	30 in.	2	977 lbs.
HL90120-48	9,000 lbs.	120 in.	141 in.	200 in.	48 in.	29.5 in.	4	977 lbs.
HL90120-60	9,000 lbs.	120 in.	141 in.	211 in.	60 in.	31 in.	4	997 lbs.
HL120132-48	12,000 lbs.	132 in.	152 in.	268 in.	48 in.	40 in.	4	1450 lbs.
HL120132-60	12,000 lbs.	132 in.	152 in.	280 in.	60 in.	40 in.	4	1500 lbs.

# HYDRAULIC VERTICAL LIFT

## BEST OF BOTH WORLDS

RGC's Hydraulic Vertical Lift (HVL) will have you on the water in no time with easy operation and reliability you can count on. The HVL combines the speed and convenience of hydraulics with flexibility and easy adjustability for varying waterfronts.



- Powered by 12V or 24V DC hydraulic control box to provide smooth, fast and quiet operation.
- High quality Marine Grade Aluminum and welded frame construction is more reliable and withstands years of use and the harshest elements.
- Corrosion resistant stainless steel cables and heavy duty polymer sheaves extend component life.
- Stainless steel hardware and silicone bronze nuts on mounting hardware are standard equipment.
- Lifting height up to 81”.
- Suitable for low water levels and fluctuating water levels.
- Accommodates Pontoon & Tritoon boats with an optional Pontoon/Tritoon kit.
- Add an RGC Canopy for complete protection of your investment.



### HYDRAULIC CONTROL BOX

Designed for maximum efficiency with superior components. Available in 12V or 24V DC power.



### WIRELESS REMOTE TRANSMITTER

Convenient control of your lift from a distance.



### SOLAR PANEL

Clean, free and low-maintenance solar power.



## HYDRAULIC VERTICAL LIFT

Model	Weight Capacity	Maximum Beam	Overall Width (inc. feet)	Overall Length (inc. feet)	Maximum Lifting Height	Minimum Platform Height	Shipping Weight (approx.)
HVL50124	5,000 lbs.	124 in.	133 in.	132 in.	69 in.	10 in.	602 lbs.
HVL50124T	5,000 lbs.	124 in.	133 in.	132 in.	81 in.	10 in.	622 lbs.
HVL70124T	7,000 lbs.	124 in.	133 in.	132 in.	81 in.	10 in.	978 lbs.

### HVL & VL OPTIONS AND ACCESSORIES

**1 PIVOTING BUNKS**  
Cradle and stabilize your boat. Easily adjustable with multiple height options.

**2 FULL LENGTH GUIDE-ONS**  
Ultimate protection for easy entry and exit.



# VERTICAL ALUMINUM LIFT

## VERSATILE AND CUSTOMIZABLE

Designed for durability and ease of use, the Vertical Lift offers a solid investment that will stand the test of time. Reliable operation offers convenience and superior protection, so you can make the most of your time on the water.



## VERTICAL ALUMINUM LIFT

### VL WINCHES & POWER DRIVE OPTIONS

#### VLDD ELECTRIC POWER DRIVE

Dependable AC or DC power provides effortless operation with remote control option. Equipped with limit switch to prevent your boat from rising too high or damaging the winch. Remote version available (VLDDRC).

#### EXTREME MAX POWER DRIVE

Powers RGC's R18 Winches and offered in 120V AC and 12V or 24V DC. Choose from switch, remote fob or remote lanyard.

#### R18LT PATENTED WINCH

RGC's patented winch with an 18:1 ratio provides easy raising and lowering of your boat. (R18HD required on VL10k.)

#### VL 4FT HANDWHEEL & FRICTION DRIVE

RGC's 4' handwheel may be used alone to lift manually, or add a friction drive available in AC or DC for effortless lifting.

- Ideal for fluctuating water levels and shallow water levels.
- Excellent lifting height, up to 80".
- Various drive options including AC, DC with remote option and Friction drive.
- Easy to assemble and adjust - no special tools required.
- Accommodates Pontoon & Tritoon boats with an optional Pontoon/Tritoon Kit.

Model	Weight Capacity	Maximum Beam	Overall Width (inc. feet)	Overall Length (inc. feet)	Lifting Height	Minimum Platform Height	Weight (approx.)
VL1250	1,250 lbs.	65 in.	73 in.	82 in.	75 in.	8.5 in.	233 lbs.
VL16065	1,600 lbs.	65 in.	73 in.	108 in.	68 in.	9 in.	415 lbs.
VL20100	2,000 lbs.	100 in.	108 in.	108 in.	68 in.	9 in.	440 lbs.
VL35116	3,500 lbs.	116 in.	124 in.	108 in.	68 in.	8 in.	505 lbs.
VL45108	4,500 lbs.	108 in.	116 in.	116 in.	68 in.	8 in.	507 lbs.
VL45116	4,500 lbs.	116 in.	124 in.	116 in.	68 in.	8 in.	510 lbs.
VL45116T	4,500 lbs.	116 in.	124 in.	116 in.	80 in.	8 in.	523 lbs.
VL50124	5,000 lbs.	124 in.	133 in.	132 in.	68 in.	9 in.	583 lbs.
VL50124T	5,000 lbs.	124 in.	133 in.	132 in.	80 in.	9 in.	597 lbs.
VL60124	6,000 lbs.	124 in.	133 in.	132 in.	68 in.	9 in.	643 lbs.
VL60124T	6,000 lbs.	124 in.	133 in.	132 in.	80 in.	9 in.	663 lbs.
VL80124T	8,000 lbs.	124 in.	133 in.	138 in.	78 in.	11 in.	860 lbs.
VL100132	10,000 lbs.	132 in.	147 in.	158 in.	78 in.	13 in.	1,217 lbs.

**3 SCREW ADJUSTABLE EXTENSION LEGS**  
Equipped with large foot plates to provide greater stability. Easily adjustable. (Deep Water Extension Legs also available.)

**4 MOTOR STOP**  
Keep your boat properly positioned and balanced for easier entry and exit.

**BOW STOP**  
Securely positions your boat in the cradle (not pictured).

**PONTOON AND TRITOON KITS**  
Outfit your HLV or VL Lift for a Pontoon or Tritoon boat with RGC's cradle kit.

**WAKEBOARD GUIDE-ONS**  
Vertical and full length guides combine to offer the ultimate protection



## HYDRAULIC

RGC'S MOST SOUGHT AFTER PWC LIFT HAS YOU ON THE WATER IN SECONDS WITH EFFORTLESS OPERATION AND ULTIMATE PROTECTION.

- Accomodates watercraft up to 2,000 lbs.
- Fastest time into the water.
- Smooth, quiet operation.
- Streamlined design, nearly invisible.
- Best option for PWC.

# PWC & SMALL CRAFT LIFTS

RELIABLE PROTECTION AND DEPENDABLE DURABILITY IN 3 DIFFERENT STYLES

- Constructed with high-quality, marine-grade aluminum for longevity and low maintenance.
- Welded framed construction is reliable and withstands years of use.
- Easy to assemble and adjust - no special tools required.

## CANTILEVER

RELIABLE PROTECTION OF YOUR WATERCRAFT

- Suitable for PWCs and small boats up to 1,200 lbs.
- Easy installation, adjustability and customization.
- All units come standard with 30" handwheel.
- Upgrade to powered lifting with an optional friction drive. AC/DC and remote control options available.



## VERTICAL

KEEP YOUR WATERCRAFT SAFE AND SECURE WITH SIMPLICITY AND DURABILITY YOU CAN COUNT ON.

- Supports up to 2,000 lbs.
- Largest lifting height up to 75".
- Manual and AC or DC drive options available.
- Easy installation, adjustability and customization.
- Ideal for shallow or uneven/sloped installations.

Model	Weight Capacity	Maximum Beam	Lifting Height	Minimum Platform Height	Bed Length	Overall Width (inc. feet)	Overall Length (inc. feet)	Adjustable Legs	Weight (approx.)
PL1000	1,000 lbs.	64 in.	46 in.	9 in.	72 in.	72 in.	N/A	4 @ 18 in.	155 lbs.
PL1200	1,200 lbs.	70 in.	46 in.	6.5 in.	96 in.	80 in.	N/A	4 @ 18 in.	257 lbs.
VL1250	1,250 lbs.	65 in.	75 in.	8.5 in.	N/A	73 in.	82 in.	Accessory	233 lbs.
VL16065	1,600 lbs.	65 in.	68 in.	9 in.	N/A	73 in.	108 in.	Accessory	415 lbs.
VL20100	2,000 lbs.	100 in.	68 in.	9 in.	N/A	108 in.	108 in.	Accessory	440 lbs.
HL17565-60	1,750 lbs.	65 in.	60 in.	25 in.	N/A	81 in.	131 in.	Accessory	235 lbs.
HL20058-48	2,000 lbs.	58 in.	48 in.	24.5 in.	N/A	74 in.	119 in.	Accessory	215 lbs.
HL20065-48	2,000 lbs.	65 in.	48 in.	24.5 in.	N/A	81 in.	119 in.	Accessory	225 lbs.





# HYDRAULIC PLATFORM AND SEAPLANE LIFT

## CUSTOM SOLUTIONS FOR UNIQUE APPLICATIONS — LIFTS AREN'T JUST FOR BOATS

RGC's Hydraulic Platform lift combines our hallmark innovation with versatility to offer endless possibilities to suit your waterfront needs. The same speed and easy operation integrates seamlessly with your dock to have you in the water quickly with ultimate protection.

- All the benefits of a hydraulic lift with versatility.
- Streamlined design, integrates with your dock.
- Can be used for Seaplanes, PWCs, sundecks and more.
- Sturdy marine grade aluminum and welded construction stands up to years of use and the harshest elements.
- Superior Hydraulic cylinders with chrome plated stainless steel shafts and stainless-steel fittings are standard.



### HYDRAULIC CYLINDERS

High quality chrome plated stainless steel shafts and stainless-steel fittings come standard with all lifts.

### DECKWAVE™ POLY DECKING

Durable, low maintenance and long lasting.



### ADJUSTABLE EXTENSION LEGS

Equipped with large foot plates to provide greater stability.



### SOLAR PANEL

Clean, free solar power is low maintenance and safe.



### WIRELESS REMOTE TRANSMITTER

Convenient control of your lift from a distance.



### HYDRAULIC CONTROL BOX

Designed for maximum efficiency with superior components. Available in 12V or 24V DC power.



# CANOPIES

## THE BEST PROTECTION NOW IN TWO STYLES

Protect your investment with an RGC canopy system. Designed for simplicity and aesthetic, an RGC canopy system will help maintain the longevity of your investment and enhance the look of your waterfront. Built with the same marine-grade aluminum and sturdy construction, RGC canopies are built to last.

**RGC'S APEX CANOPY** has a streamlined look. The ultimate protection in a sleek modern design, the Apex Canopy is built with the same top quality and durability you would expect from RGC.

- All frames are constructed with durable marine grade aluminum.
- Extra bracing adds stability for longer length canopies.
- Quicklash attachment system for easy installation and removal from frame.
- Sunbrella® fabric is stain and fade resistant.
- Easy assembly with basic tools.



## TRADITIONAL - STRAIGHT EDGE AND SCALLOPED EDGE

For a classic look that stands the test of time, choose from RGC's straight or scalloped canopy design. Options include: Canopy extensions, seagull eliminator, leg extensions and canopy shelves.



FEATURING CANOPY  
EXTENSIONS

### STANDARD COLORS

Apex Canopy Sizes for Hydraulic Lift (length x width)
25 ft. x 124 in.
28 ft. x 124 in.
33 ft. x 124 in.
38 ft. x 132 in.

Traditional Canopy Sizes* (length x width)	
21 ft. x 108 in.	24 ft. x 124 in.
24 ft. x 108 in.	26 ft. x 124 in.
26 ft. x 108 in.	28 ft. x 124 in.
24 ft. x 116 in.	30 ft. x 124 in.
26 ft. x 116 in.	32 ft. x 124 in.
28 ft. x 116 in.	32 ft. x 132 in.

\*Note that only widths of 124 in. and 132 in. are suitable for Hydraulic Lifts.



Signature and Optional colors are also available through Sunbrella®. Vinyl also available.



# PONTOON TRITOON LIFT OPTION

## BIG LIFT? NO PROBLEM.

Reliable, Easy to Use, Low-Maintenance Support for Pontoons and Tritoons. Pontoon and Tritoon boats can now benefit from the advantages of any RGC lift. Our optional Pontoon/Tritoon kits fit on any of our Hydraulic, Vertical Hydraulic and Vertical Aluminum lifts. RGC's standard for durability applies.

- Outfit any HL, HVL, or VL with a Pontoon/Tritoon Kit.
- Constructed with high-quality marine grade aluminum for longevity and low maintenance.
- Excellent lifting height, up to 81”.
- Easy to assemble and adjust - no special tools required.
- Various drive options including AC, DC with remote options and Friction drive.
- Cradles & Guides - Properly position your boat within the lift
- Deck brackets - pick your boat up out of the water by the deck between the toons.



# BEACHER RAILWAY

## UNIQUE WATERFRONT SOLUTIONS

The Beacher Railway system is an adaptable solution for a variety of waterfront environments and installations. For shores with unique waterfronts or restrictive building ordinances, these systems allow for easy entry and exit from the water and require minimal maintenance.

- Solution for shallow, sloping waterfronts.
- Constructed with marine grade aluminum for longevity and low maintenance.
- Highly adaptable and customizable with various track lengths and curved track sections available.
- Pivoting bunks - Cradle and stabilize your boat.
- Easily adjustable with multiple height options.
- Suitable for Pontoon boats with optional Cradle Kit and Deck Bracket Kit.
- Available in 4,000 & 6,000 lb. capacities.

# HYDRAULIC PILE MOUNT LIFT

## A PERMANENT SOLUTION TO YOUR WATERFRONT NEEDS

Hydraulic Pile Mount Lifts (HPM) offer the reliability and speed of hydraulics in a permanent design. The HPM is nearly invisible in boathouses and is the perfect solution to space constricted waterfronts and rough water installations.



**HPM WITH SIDE MOUNTED BRACKETS**  
(Artistic Rendering)

- Hydraulic design is fast, low maintenance and minimizes wear on cables (no winding).
- Side or Top Mounted brackets are bolted with stainless steel fasteners for a reliable attachment.
- Salt Water Model includes all stainless steel hydraulic fittings, stainless counterbalance valves and cradle anodes.
- Adjustable lifting height up to 96".
- Marine grade aluminum components, polymer sheaves, stainless steel wire rope and 20' hoses are standard equipment.
- Two Limit Switches restrict upward travel of the platform, preventing damage to the boat, lift and mounting structures.
- Available with or without aluminum/vinyl bunks to accommodate a platform or cradle.
- 2 Wireless remote transmitters offer convenient control of your lift from a distance.



### **SIDE MOUNT BRACKETS**

Triple bolted to ensure a secure attachment for extreme reliability.

**STAINLESS STEEL WIRE ROPE**

Stands up to the harshest elements, including salt water environments.

**VINYL BUNKS**

Cushion and protect your boat and are stain and fade resistant.

**LIFTING CRADLE**

Constructed with thick marine grade aluminum, creating a stable, reliable foundation.



**DUAL HYDRAULIC CYLINDERS**

In sturdy marine grade aluminum housing for protection and stability.

**STURDY STEEL BRACKETS**

Stainless steel brackets ensure a secure attachment to the pilings.

**LIMIT SWITCHES**

Offer protection and adjustability.

**HPM WITH TOP MOUNTED BRACKETS**  
(Artistic Rendering)



**TOP MOUNTED BRACKETS**

Are secured with dual stainless steel fasteners ensuring a reliable attachment.

Model	Weight Capacity	Maximum Beam	Distance Between Cables Fore & Aft	Bunk Length*	Overall Lift Length	Lifting Travel	Hydraulic Cylinders
HPM0814	8,000 lbs.	144 in.	132 in.	168 in.	168 in.	96 in.	2
HPM0819	8,000 lbs.	144 in.	192 in.	N/A	228 in.	96 in.	2
HPM1217	12,000 lbs.	168 in.	168 in.	216 in.	204 in.	96 in.	2
HPM1222	12,000 lbs.	168 in.	228 in.	N/A	264 in.	96 in.	2
HPM1617	16,000 lbs.	168 in.	168 in.	216 in.	204 in.	96 in.	2
HPM1622	16,000 lbs.	168 in.	228 in.	N/A	264 in.	96 in.	2

\*HPM0814, HPM1217 and HPM1617 offered with bunks. Longer lifts come with cradle I-beams only.



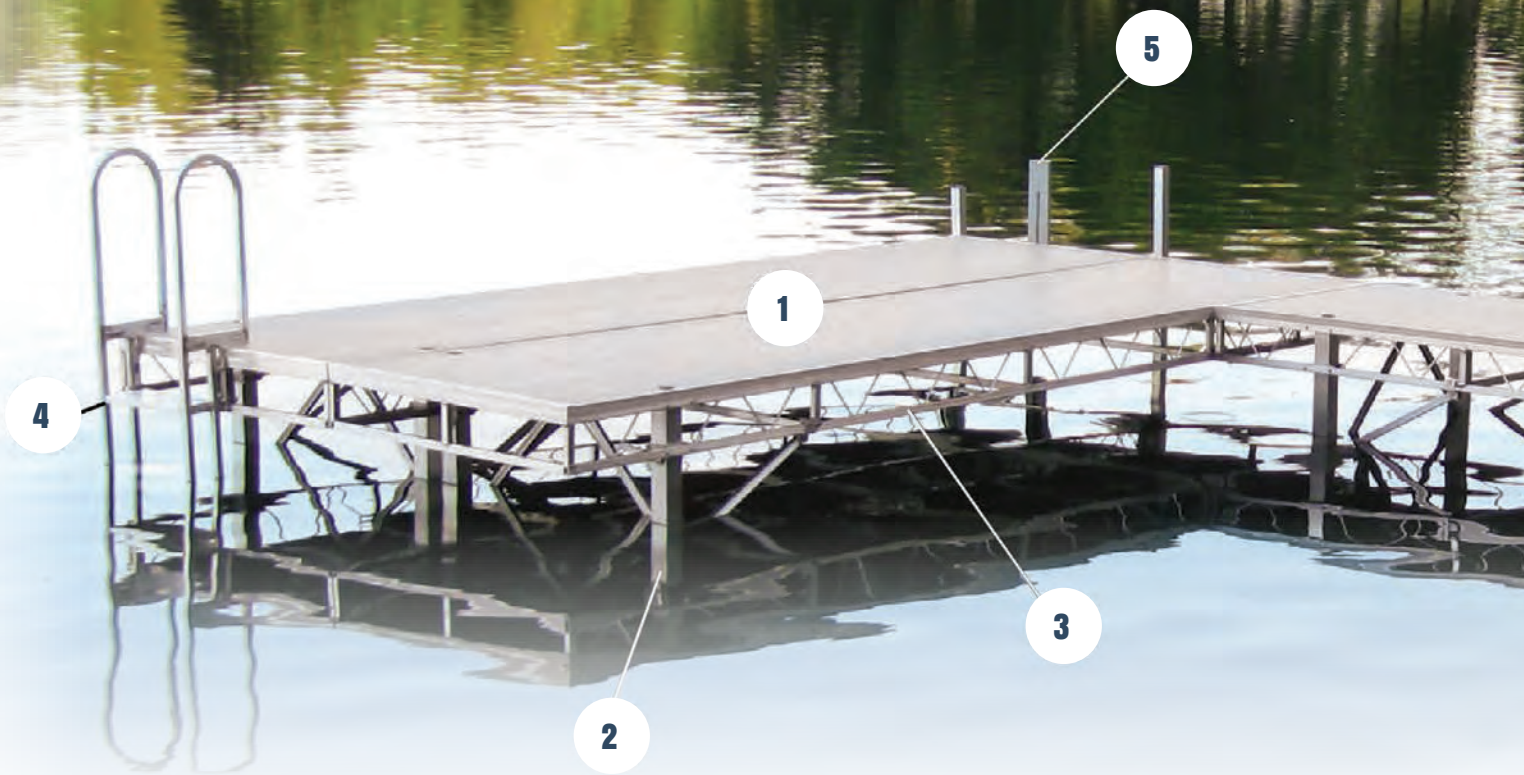
# DOCKS

**VERSATILE. DURABLE.  
CUSTOMIZABLE.**

RGC Marine's Docks are known for both their durability and versatility. Designed with high-activity waterways in mind, our docks are built to stand up to the impacts of busy traffic and severe weather. Sturdy enough to withstand a bustling marina, yet highly adaptable, our docks are suitable for both commercial and residential use.

- **Durable** - Built from the most reliable marine-grade aluminum components. Heavy Duty docks are engineered for peak strength with Custom Aluminum Extrusions.
- **Customize** - Offered in a wide variety of configurations and easily adaptable for various water depths. Additional options create endless possibilities.
- **Low Maintenance** - High Quality Marine Grade Aluminum and stainless steel fasteners are rust and corrosion resistant. Powder-coated aluminum or DeckWave™ poly decking are rust free and never require painting or sanding.
- **Safety** - Safety is a top priority at RGC and we only offer slip resistant decking options that will never splinter or rot. Additional options add to safety.
- **Easy to Install** - Easy to assemble sections can be modified and repositioned, no special tools required.





## FEATURES:

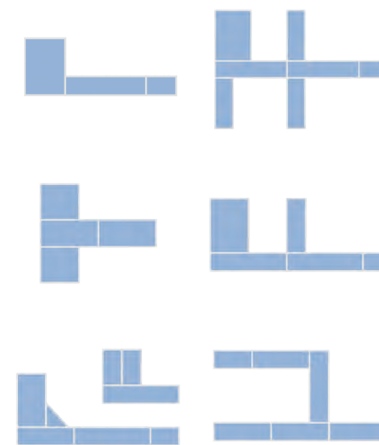
- 1 DECKING**  
Low maintenance powder coated aluminum or DeckWave™ poly.
- 2 SCREW ADJUSTABLE LEGS**  
Allow for quick, simple tweaks without the need to get into the water.
- 3 LEG BRACING**  
Provides additional support and rigidity when long extension legs are required.
- 4 TRUSS DOCK LADDERS**  
Offered in 3-step (63") and 4-step (74") models.
- 5 VERTICAL BUMPERS**  
Protect your dock and your boat and are 30" high.

# TRUSS DOCKS

DESIGNED SPECIFICALLY TO WORK WELL IN BOTH RESIDENTIAL AND LIGHT MARINA INSTALLATIONS

- Truss design allows waves to roll through adding stability to the durable construction.
- Quick mounting brackets make adding to, or changing the shape of your dock, a snap.
- The easy-to-adjust screw legs mean quick, simple tweaks can be made without getting in the water.
- Lightweight and easy to install (no special tools required).
- Highly adaptable-variety of configurations.

## CONFIGURATIONS:



Dock Sections (2 leg holes)	Powder-Coated Aluminum	DeckWave™ Poly
2' x 8' or 16'	X	X
4' x 12' or 16'	X	X
5' x 16'	X	X
Sun Decks (4 leg holes)		
4' x 8'	X	X
8' x 8' or 12'	X	X
6' x 12'	X	X
Ramps		
4' x 6', 8', 12'	X	X
4' x 16'	---	X
6' x 8'	X	---

# HEAVY DUTY DOCKS

SUITABLE FOR A VARIETY OF APPLICATIONS INCLUDING MARINAS, WATERSIDE COMMUNITIES AND RESIDENTIAL INSTALLATIONS

RGC's Heavy Duty Dock line features added durability combined with easy configuration making it suitable for busy high impact use in a variety of water depths and shorelines. It's no wonder RGC's Heavy Duty Dock is the top choice of commercial marinas and municipal applications.



- Stainless steel fasteners for added durability.
- Custom Aluminum Extrusions engineered for peak strength.
- Adaptable for various water depths and shorelines. Can be configured to accommodate break walls.
- Solid side-walls add to the safety and stability in high traffic areas.
- Widest range of width options in the industry – easily configure to suit any need.
- Can accommodate a 20' span between legs or pilings.
- The choice of commercial marinas and municipal applications.

Dock Sections	Powder-Coated Aluminum	DeckWave™ Poly
1' x 8', 12' or 20'	---	X
2' x 20'	---	X
3' x 10', 12', 14', 16', 18', or 20'	X	X
4' x 10', 12', 14', 16', 18', or 20'	X	X
6' x 10', 12', 14', 16', 18', or 20'	X	X
<b>Sun Decks</b>		
8' x 10', 12', 16', or 20'	X	X
<b>Ramps</b>		
4'x6', 4'x8', 4'x12', 6'x8'	---	X

# FLOATING DOCKS

When a stationary dock is not an option for your waterfront, any of RGC's docks can be configured as a floating dock. Our floating docks offer the same level of customization, durability, safety and ease of installation as our fixed docks.

- Ideal for applications where the water level fluctuates.
- Floating docks are suitable for use in waters of any depth.
- Foam filled using 1 to 1.5 density EPS.
- All floats meet U.S. Army Corps of Engineers regulation #36 CFR Part 327.

## OUR QUALITY PLEDGE TO YOU

*At RGC, quality is more than a word - it's a standard by which we promise to work. For 75 years, we have consistently manufactured the best products for the most demanding environments. From concept to creation, our products are innovative, efficient and built to last. We continually invest in our processes, our technology and our people to deliver the highest caliber product to every customer worldwide.*



### WARRANTY

*All RGC Marine Boat Lifts and Docks come with a 15-year limited warranty on aluminum materials and workmanship in fresh water applications.*



***PROUDLY  
BUILT TO LAST  
IN THE USA FOR OVER 75 YEARS***

1849 HARLEM ROAD | BUFFALO, NY 14212  
1-800-831-LIFT (5438) | 716-895-1547 (FAX)  
WWW.RGCMARINE.COM | SALES@RGCMARINE.COM

